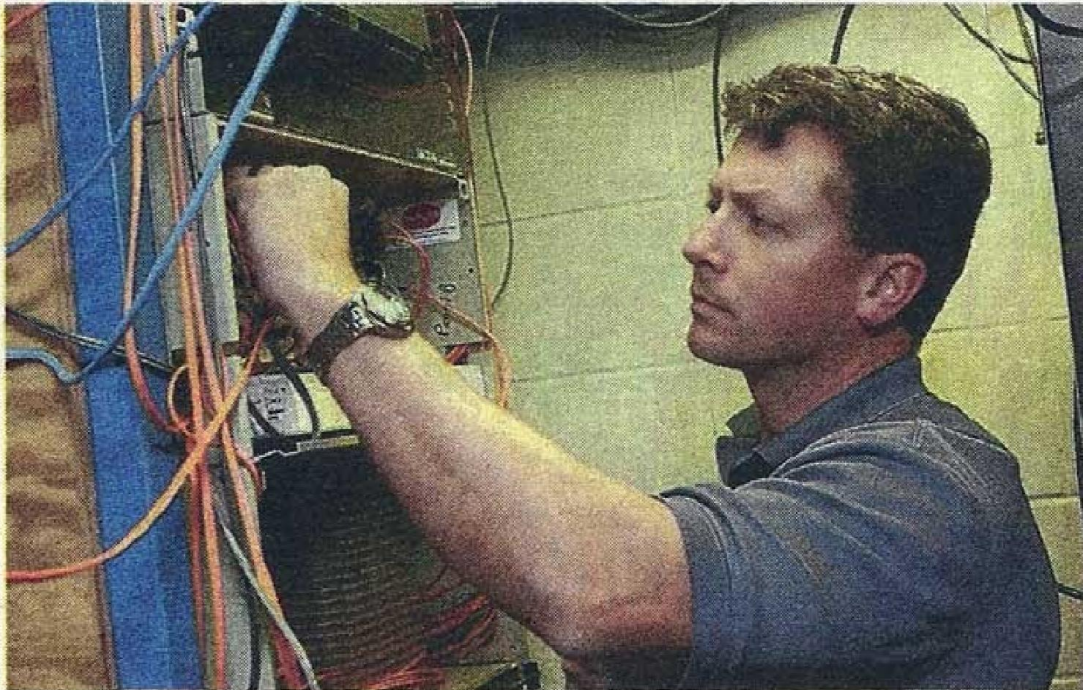


10/14/09

# Metronet, South Shore FiberLink connecting at airport



**Bryan Baker, of Com-Control Inc., works with Metronet lines Oct. 15 in preparation for the connection of Metronet and South Shore FiberLink at South Bend Regional Airport.**

Tribune Photo  
MARCUS  
MARTER

John Schalliol, terminal maintenance supervisor Cliff Jenkins and IT supervisor Norma Brown supported the project, as did Guljas.

The facility is not a data center like commercial operations such as the one at Union Station. Instead, those centers could become customers of the airport site in order to provide the increased connectivity to their own customers.

The airport can market the cross-connect capability,

electric power

footage for e  
"They've  
best power  
says. "The s  
alleled."

Some c  
showing int  
ject even bel  
ed.

"We're ta  
this now,"

"We've alre  
dozen requ  
nection you  
body else."

nt  
the base-  
Bend Re-  
between the  
Metronet  
outh Shore  
ost region-  
le more af-

s converge  
one fiber  
to the oth-  
are in the  
them.

going to  
ny prob-  
Guljas, the  
of admin-  
ance. "It's  
t a little bit  
erator for  
rity.

about it.  
ce to pro-  
od on so

Com-Con-  
has been  
fficials to  
s it an "ac-

tive cross-connect facility" — active because hardware can be plugged into the fiber system.

"It's something we created

from scratch," Baker says. "That is a regional hub. When these things came together in the basement, we approached the authority

and said you ought to make this conducive to business. You can become a cross-connect facility."

Airport executive director



**Keilman Business Consulting, Inc.**

57731001

TRIBUNE  
**BUSINESS WEEK**

**www.Southbendtribune.com**  
**To Subscribe call (574) 233-1234**

**SPECIAL SECTION**

**OSCEOLA**